

3D view from the 18th to the EOA clubhouse.

Midvaal's exclusive Afropean luxury

The R1.3bn Eye of Africa development of golf course developer Medallist Australia (Medallist), in the Midvaal region, is on track for the launch of its Greg Norman-designed golf course this month. The 680ha development will breathe new life into the region, making way not only for an exclusive golf, residential and nature park facility, but also injecting employment opportunities and area upgrades, Medallist COO Brad Tindale tells Nelendhre Moodley.

Medallist has extensive experience in golf estate developments, having constructed, or being in the process of developing, some 14 golf estates in both Australia and the US.

Although this is the company's first foray into Africa, it is already on the look-out for potential golf estate development opportunities.

"We are looking at expanding into other regions, including Cape Town. However we have not as yet found something suitable," Tindale notes.

In 2007 Medallist began construction on the Eye of Africa development and to date has already completed construction of two phases, totalling some 450 freehold stands and seven medium density sites. The golf course is complete, and there are currently 20 houses under construction.

"The Eye of Africa is an elite development that sets

the benchmark for golf estate development in SA. We did sophisticated site analysis prior to embarking on the development."

This includes an environ-

mental impact assessment, taking into account the natural flora and fauna and the appropriate energy-efficient construction and infrastructure processes.

Designed exclusively by Greg Norman Golf Course Design, the golf course has been designed from the first tee to the eighteenth green to seamlessly integrate with its natural surrounds.

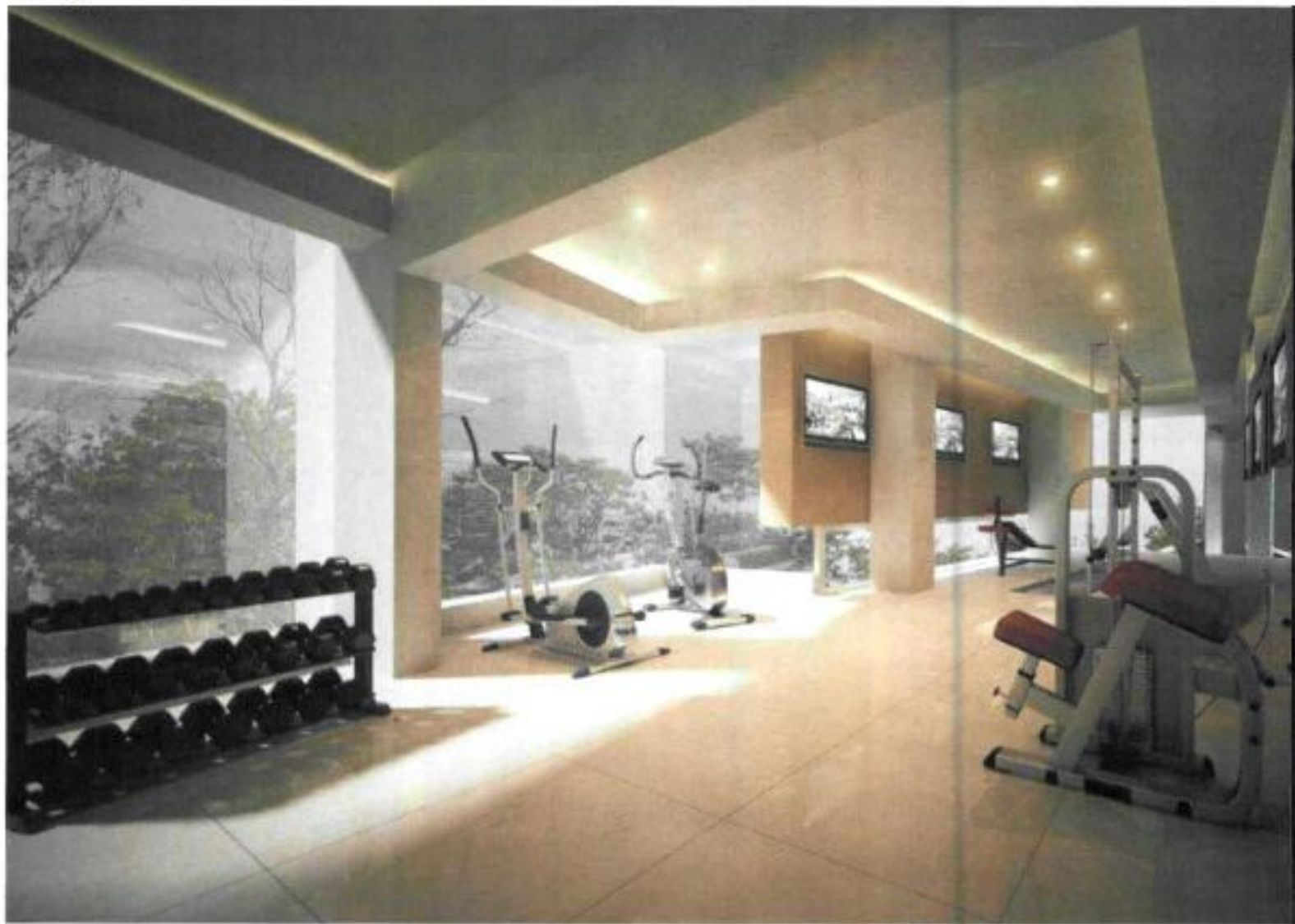
The course is a par 72, 18-hole championship golf course, encompassing an overall distance of 7000m.

The course incorporates all the Greg Norman trademark design elements, such as using natural topography, elevated tees, extensive use of bunkering and the blending of natural and surrounding environments.

Meanwhile, the Eye of Africa's driving range, launched in November, has since proved extremely popular, especially with local scholars keen to improve their golfing skills. A number of schools have established partnerships with the development in a bid to further scholars' skills.

The driving range has been designed with the dual functionality of being a full driving range facility, as well as a nine-hole practice course.

Speaking of the residential component, Tindale says that by the end of this year it is hoped that between 100 and 150 homes will be in the process of being built.



"The project is a catalyst for job creation, infrastructure development and prosperity in the region," Tindale enthuses.

"The Eye of Africa development will take about seven years for phased completion."

Aside from the Eye of Africa luxury development, Medallist is currently constructing two golf estates in Australia (Stone Cutters in Sidney and Settlers Run in Melbourne) and two more in the US (Tennessee National in Tennessee and The Savannah Quarters in Savannah George). ■

